

Pastor Training Center of Eastern Panama



About Us

The development of a pastor training center in eastern Panamá is being sponsored by Panamá Mission Foundation (PMF). PMF is a nonprofit corporation that is dedicated to preaching the gospel of Jesus Christ, helping the poor, and uniting believers in rainforest villages east of the former Canal Zone. While the exact number of villages is not known, mission opportunities abound in hundreds of villages in the region. PMF's initial efforts have been concentrated in the District of Chimán.

PMF operates under the direction of Vince Payne, a former senior pastor from Madera, California. He is accompanied in Panamá by his wife Gretta and their daughter Bryanna (shown in the photo to the right).



Vision and Goals

Our Vision. Our vision is to see the Gospel of Jesus Christ reach every village in eastern Panamá. We want to witness a radical transformation in the spiritual and physical well-being of the people in the region that directly results from the emergence of hundreds of disciples who passionately follow Jesus.

Our 5-Year Goal. By 2014, we hope to have committed followers of Jesus Christ serving as pastors in each of the 7 villages in the District of Chimán.

Short Term Objectives

- Continue supporting Christians in communities where churches have been rejuvenated during the past year (on-going)
- Complete the first phase of a pastor training center in the village of Unión Santeña (June 2010)
- Start classes at a new pastor training center in Unión Santeña (September 2010)
- Establish a church in the village of Chimán (May 2011)

5-Year Objectives

- Substantially improve the quality of life for Christians in the District of Chimán
- Graduate the first class of pastors
- Complete phase 2 of a pastor training center, which will allow guest preachers and Christians from other areas, including the U.S, to visit more easily
- See churches thriving in all seven villages in the District of Chimán

Major Accomplishments During Our First Year

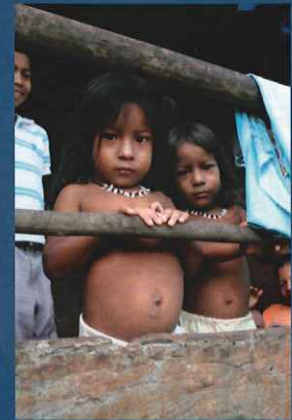


**New Churches in
Unión Santeña (above)
and Majé (below)**



- **Established Relationships with Community Leaders.** Panamá Mission Foundation has developed strong working relationships with tribal leaders, businessmen, landowners, and politicians in several villages during the past year. By God's grace, several of these leaders were recently elected to prominent positions in government, including the Mayor of the District of Chimán, the President of the Wounan Indian Nation, and the Panamanian National Assembly.
- **Helped Complete Churches.** Panamá Mission Foundation and Christians from the United States worked alongside local Christians to build a new church in the village of Unión Santeña and complete churches in the villages of Majé and Chepo. Walls were built, roofs were raised, and windows were secured. These three churches will serve as the initial source for students who will attend the pastor training center when it opens next year.
- **Preached the Gospel.** During the past year, Vince Payne and guest pastors from the United States preached the Gospel of Jesus Christ to hundreds of villagers in the region.

- **Distributed Bibles and Baptized New Believers.** People of all ages were baptized during the past year, and more than 400 new Spanish bibles were distributed to residents in the villages of Unión Santeña, Majé, Chimán, and Chepo. Most of the people who received Bibles this year had never previously owned one. Study bibles were given to the elders of local churches to improve the quality of local preaching. Children's bibles and story books were also provided.
- **Enhanced the Quality of Life for Many New Christians.** During the past year, Panamá Mission Foundation distributed personal hygiene and medical kits to more than 150 families. The kits contained basic medicines, hygienic supplies, and other necessities that are very difficult to obtain in the villages. The PMF team also distributed reading glasses to more than two dozen adults, which allowed many Christians to read the Bible for the first time. More than 1,000 concrete blocks were manufactured and given to residents in Unión Santeña to improve the quality of their homes. Running water was connected. Electric generators were installed, and local laborers were employed throughout the year to clear land, plant crops, make doors, and complete work at local churches. Collectively, these works have significantly improved the quality of life for dozens of Christian families.





New Churches in Unión Santeña (above) and Majé (below)



Major Accomplishments During Our First Year

- Established Relationships with Community Leaders.** Panamá Mission Foundation has developed strong working relationships with tribal leaders, businessmen, landowners, and politicians in several villages during the past year. By God's grace, several of these leaders were recently elected to prominent positions in government, including the Mayor of the District of Chimán, the President of the Wounan Indian Nation, and the Panamanian National Assembly.
- Helped Complete Churches.** Panamá Mission Foundation and Christians from the United States worked alongside local Christians to build a new church in the village of Unión Santeña and complete churches in the villages of Majé and Chepo. Walls were built, roofs were raised, and windows were secured. These three churches will serve as the initial source for students who will attend the pastor training center when it opens next year.
- Preached the Gospel.** During the past year, Vince Payne and guest pastors from the United States preached the Gospel of Jesus Christ to hundreds of villagers in the region.

- Distributed Bibles and Baptized New Believers.** People of all ages were baptized during the past year, and more than 400 new Spanish bibles were distributed to residents in the villages of Unión Santeña, Majé, Chimán, and Chepo. Most of the people who received Bibles this year had never previously owned one. Study bibles were given to the elders of local churches to improve the quality of local preaching. Children's bibles and story books were also provided.
- Enhanced the Quality of Life for Many New Christians.** During the past year, Panamá Mission Foundation distributed personal hygiene and medical kits to more than 150 families. The kits contained basic medicines, hygienic supplies, and other necessities that are very difficult to obtain in the villages. The PMF team also distributed reading glasses to more than two dozen adults, which allowed many Christians to read the Bible for the first time. More than 1,000 concrete blocks were manufactured and given to residents in Unión Santeña to improve the quality of their homes. Running water was connected. Electric generators were installed, and local laborers were employed throughout the year to clear land, plant crops, make doors, and complete work at local churches. Collectively, these works have significantly improved the quality of life for dozens of Christian families.



The First Steps Toward Developing a Pastor Training Center Have Been Completed



Access to the villages has been enhanced with a new boat and 4WD pickup. The total time to reach the villages has been reduced from 10 to 3 hours.



Land for the school has been acquired and cleared. Crops have been planted, and horses are now grazing on the land.

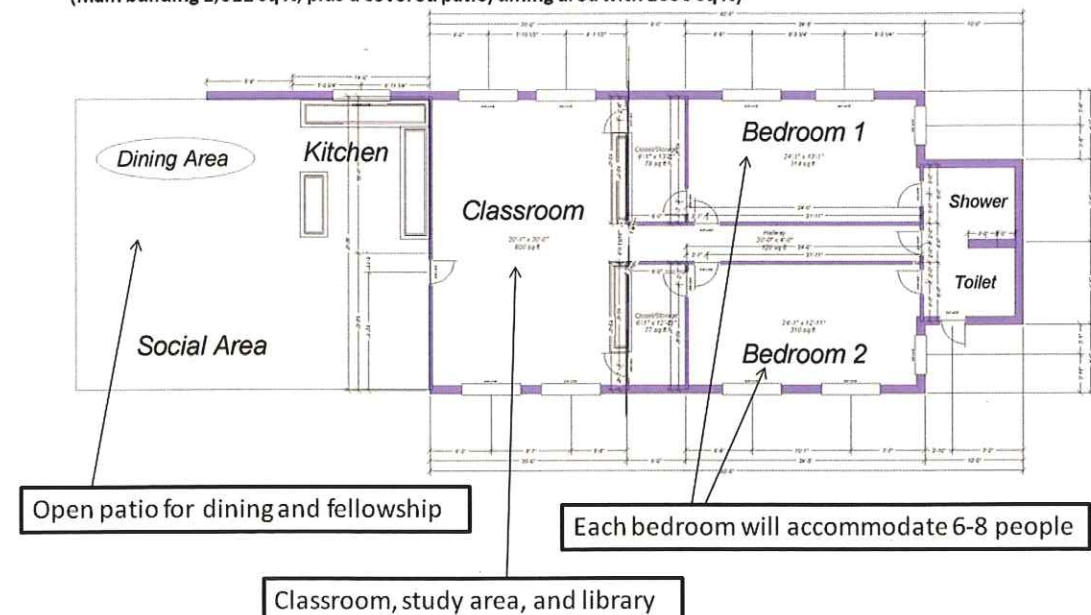


Running water has been connected. The property also has direct access to a river and a road.



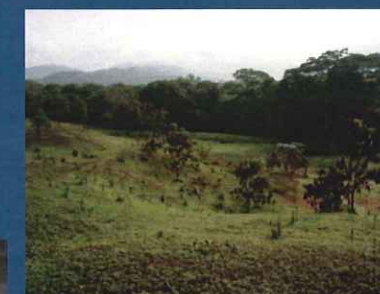
Pastor Training Center of Eastern Panama Floor Plan for Phase 1

(main building 1,612 sq ft; plus a covered patio/dining area with 1050 sq ft)



ESTIMATED COSTS FOR PHASE 1

\$ 3,500 block-making machine **DONATION RECEIVED!**
 \$ 5,500 additional land to enhance access to the site
 \$ 28,600 materials for the main building (1,612 sq ft)
 \$ 8,500 materials for the open patio/kitchen (1,050 sq ft)
 \$ 15,000 labor costs
 \$ 8,900 contingency
\$ 70,000 TOTAL



Lord Willing...
The Center
Will Open
In July 2010



Jesus Said, "I tell you, open your eyes and look at the fields! They are ripe for harvest." (John 4:35)

"...let your light shine before men, that they may see your good works and glorify your Father in heaven (Matthew 5:16)

You Can Help!

Would You Consider Providing Employment for One of These Future Students?



Julio



Chino



Alfonzo



Milciades



Joni

- **Pray.** Please pray for the people of the District of Chimán and for Panama Mission Foundation's efforts to serve people in the area.
- **Visit.** If you or others in your congregation would be interested in a short-term mission trip to Panamá, please contact us at vince@panamamission.org.
- **Make a One-Time Gift to Support the Completion of Phase 1 of the Pastor Training Center.** We need to raise approximately \$70,000 by the end of 2009 in order to complete construction of the school next year.
- **Give Monthly to Provide Employment for Students and Needy Christians in the Area.** Most of the men who will attend the school are very poor. Without financial assistance, they cannot afford to care for their families while they attend the school. In order to make it possible for these men to attend, employment will be provided at the school. Future pastors will raise crops and help with the construction and maintenance of the school. In exchange, they will receive free tuition, lodging, and wages to replace the income lost while attending school. Employment opportunities will also be offered to needy Christians in the surrounding villages. By making a monthly contribution of just \$10, you can support a future pastor or provide employment to a fellow Christian for an entire day. For \$50 per month, you can support a student or provide employment for an entire week, and for \$200 per month, you can support someone for a full month. Dedicated monthly giving for this purpose will transform the lives of Christian families like the ones in the photos to the left; 100% of your giving for this purpose will be used to pay students and others who support the school.

For More Information or to Give On-Line

www.panamamission.org

or

Send checks to:

PMF

P.O. Box 907, Madera, CA 93639

PMF is a non-profit organization [501c3]; all gifts are tax deductible

TO CONTACT US:

vince@panamamission.org or (661) 339-3537

This phone number is forwarded to Panama over the Internet